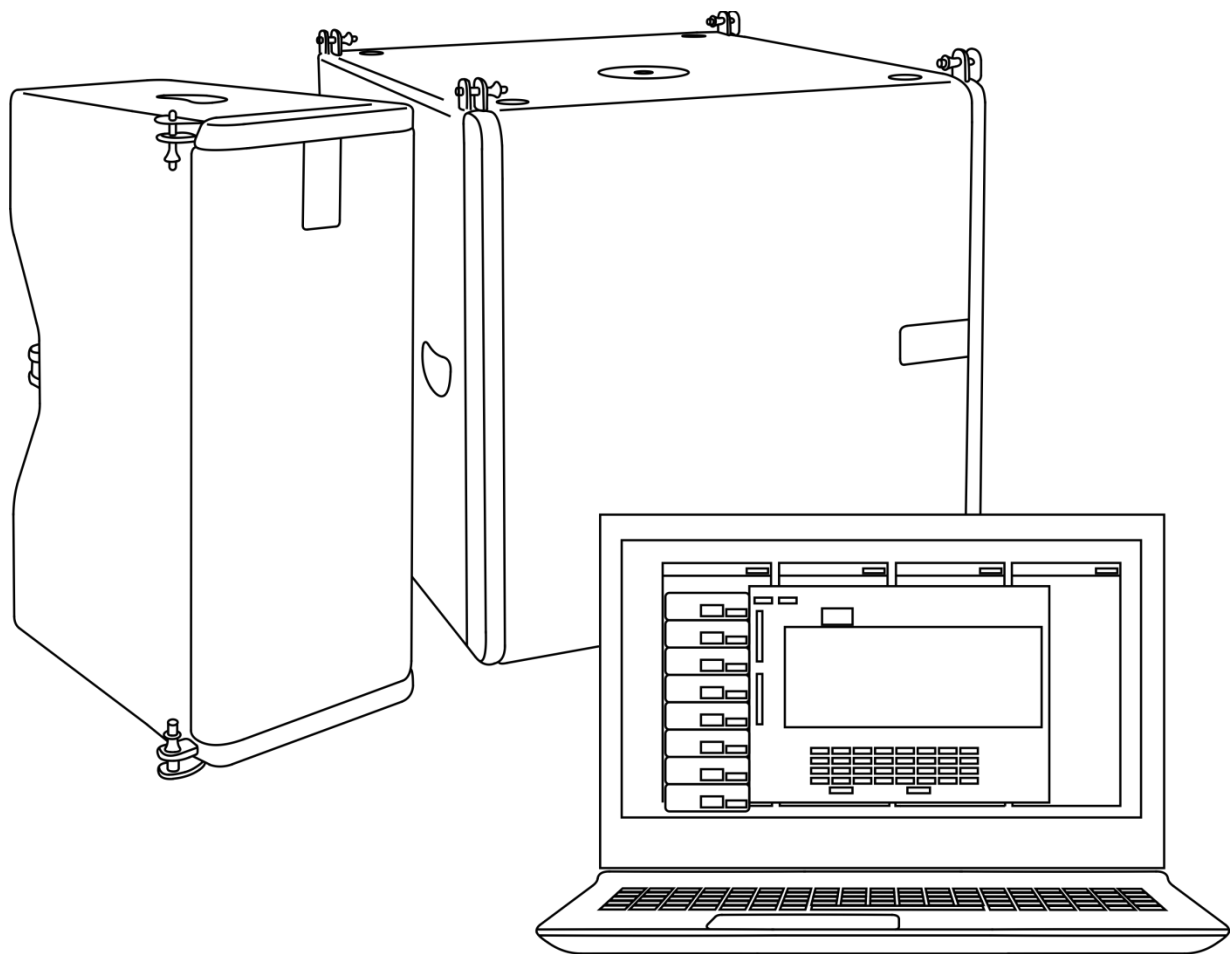


# Odin

AUDIOSYSTEMS BY DAP

MANUAL



ENGLISH

**Odin Editor**

**V1**

## Table of contents

---

<b>Software License Agreement</b> .....	2
Grant of License .....	2
Copyright .....	2
Restrictions.....	2
No Warranty.....	2
No Liability.....	2
PC System Requirements.....	3
Termination of the License .....	3
General .....	3
<b>Minimum System Requirements</b> .....	3
<b>Software Installation</b> .....	4
<b>Speaker Configuration</b> .....	8
<b>Preset Section</b> .....	9
<b>Software Update</b> .....	10
<b>About</b> .....	10

## Software License Agreement

---

This is a legal agreement between You (an individual or a corporation) and Highlite International B.V. regarding the usage of this software product (herein referred to as "SOFTWARE"). Please read carefully the terms of this License Agreement before installing or using the SOFTWARE. By installing, copying, or starting the use of the SOFTWARE, you hereby consent to the terms of this License Agreement. If you do not agree with the terms, do not download, install, copy, or otherwise use this software program.

### Grant of License

Highlite International B.V. grants You the following non-exclusive rights to use the SOFTWARE in accordance with the terms of this License Agreement.

- You may only use the SOFTWARE on a specific single computer at one time. Use of the SOFTWARE shall include loading the SOFTWARE into temporary memory (i.e., RAM) or installing the SOFTWARE into storage media (i.e., hard disk) of the computer on which you will use the SOFTWARE.
- You may make one copy of the SOFTWARE for backup purposes only (CD, DVD or any other media), but you are prohibited to make any other copy.
- Multiple-Shift Usage and Network Usage: You may use the software with each available hardware. If You, however, change the hardware, You must delete the software from the mass storage of the hitherto used hardware. Storing or using on more than one hardware is not allowed. The use of the software within a network or another computer system with several workstations is not allowed, if the program can be used simultaneously by several computers.

### Copyright

The SOFTWARE and its copyrights are the property of Highlite International B.V. and are protected by all international copyright laws and treaties. Therefore, you must treat the SOFTWARE like any other copyrighted material (i.e., CD, DVD, book). All rights that are not provided for herein are reserved by Highlite International B.V.. Copyright notice and other software identification features must not be removed or changed. The same refers to the suppression of appropriate features of the screen display.

### Restrictions

- You shall not modify, change, reverse engineer, decompile, or disassemble the SOFTWARE and the copyright notice and copyrighted logo.
- You shall not loan, rent, lease, sublicense or transfer the SOFTWARE, whole or a part, to any third party. But You may permanently transfer the SOFTWARE and accompanying printed materials provided you retain no copies of the Software and recipient agrees to the terms of this License Agreement. If the SOFTWARE has been updated or upgraded, any transfer of the SOFTWARE must include the most recent update and all prior versions.
- You must not give the SOFTWARE to third parties.
- If this SOFTWARE contains multiple types of media (such as floppy disks and CD-ROM) and these media contain the same software, you may use only the one form of media that is appropriate for your computer.

### No Warranty

Highlite International B.V. makes no warranty, either expressed or implied, with respect to any of the software, including, without limitation, merchantability or fitness for a particular purpose.

### No Liability

In no event shall Highlite International B.V. be liable to end-users for any damages whatsoever, including but not limited to financial damages for loss of business profits or business information arising from the use of, or inability to use this product. The foregoing provision is effective even if Highlite International B.V. has been advised of the possibility of such damages. Even if the SOFTWARE has any material, verifiable, and reproducible program errors, Highlite International B.V. shall have no liability to modify such errors.

## PC System Requirements

Due to system variability of computer hardware it is not possible to determine general system requirements for the optimum operation. In the following you will find some recommended system requirements which have been established after several tests with various PCs. Even if your PC fulfils the system requirements, problems can occur with the Odin Editor software, due to special hardware or software configurations. It is not possible to provide a 100 percent operational guarantee with the Odin Editor software.

## Termination of the License

Highlite International B.V. reserves the right to terminate this License Agreement if you fail to comply with any of the terms of this License Agreement. Upon such termination, you shall immediately stop using the SOFTWARE.

## General

- Any provision of this Agreement which is prohibited or unenforceable in any jurisdiction shall be ineffective to the extent of such prohibition or unenforceability without affecting, impairing or invalidating the remaining provisions hereof.
- This License Agreement shall be governed by and construed in accordance with the laws of the Netherlands without reference to the principles of conflicts of laws.

## Minimum System Requirements

---

- Microsoft® Windows® 8 operating system or higher
- Intel® Core™ i3, or higher, processor
- 1 GB system memory RAM (2 GB recommended)

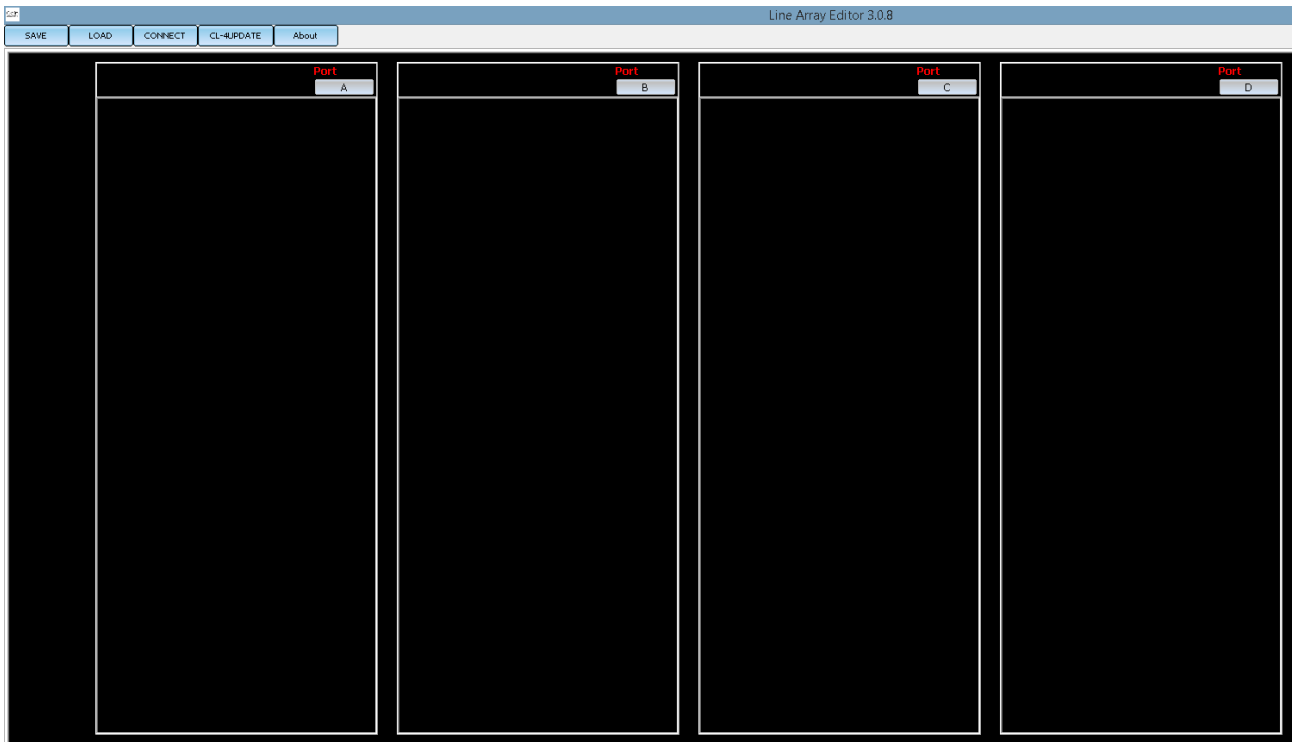
## Software Installation

01) Connect all your Odin devices, carrying out the handling according to the directions from the respective manuals.

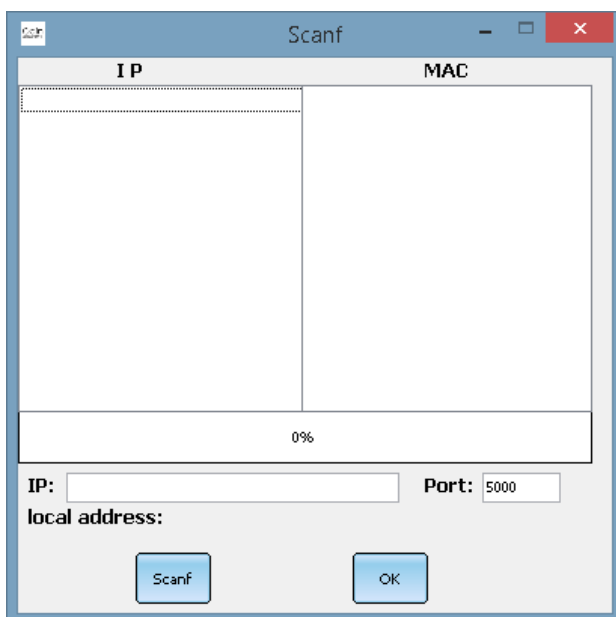


LineArraySys(ondin)(nofactory)V3.08.exe

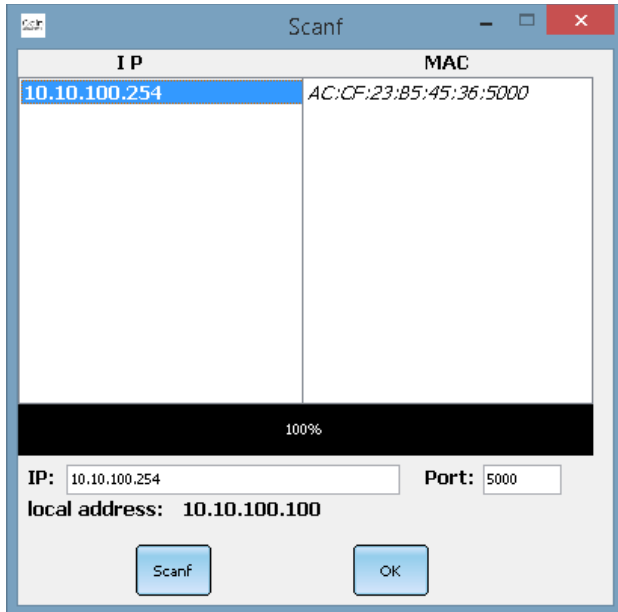
02) Double click on the icon to open the Odin Editor. The following screen will appear:



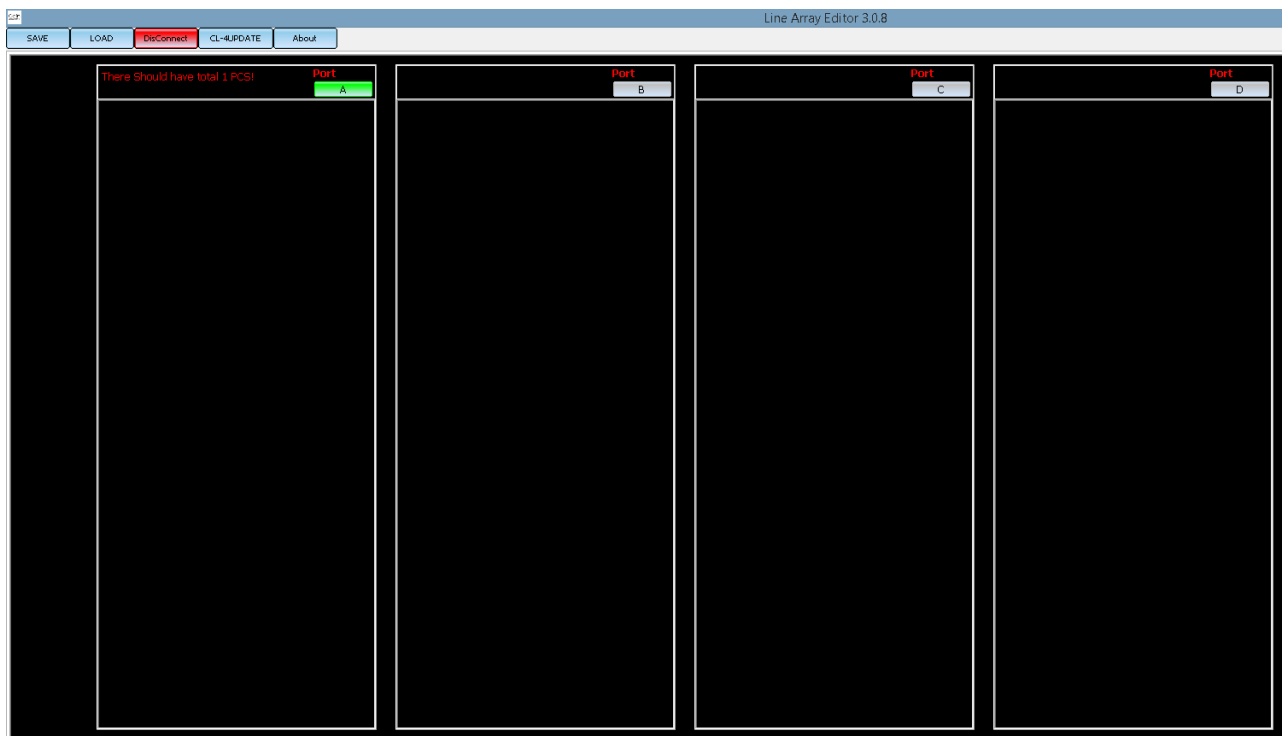
03) Click on the **CONNECT** button, in order to connect the software to the network. The screen will show:



04) Click on the **SCANF** button, to connect. The screen will show:

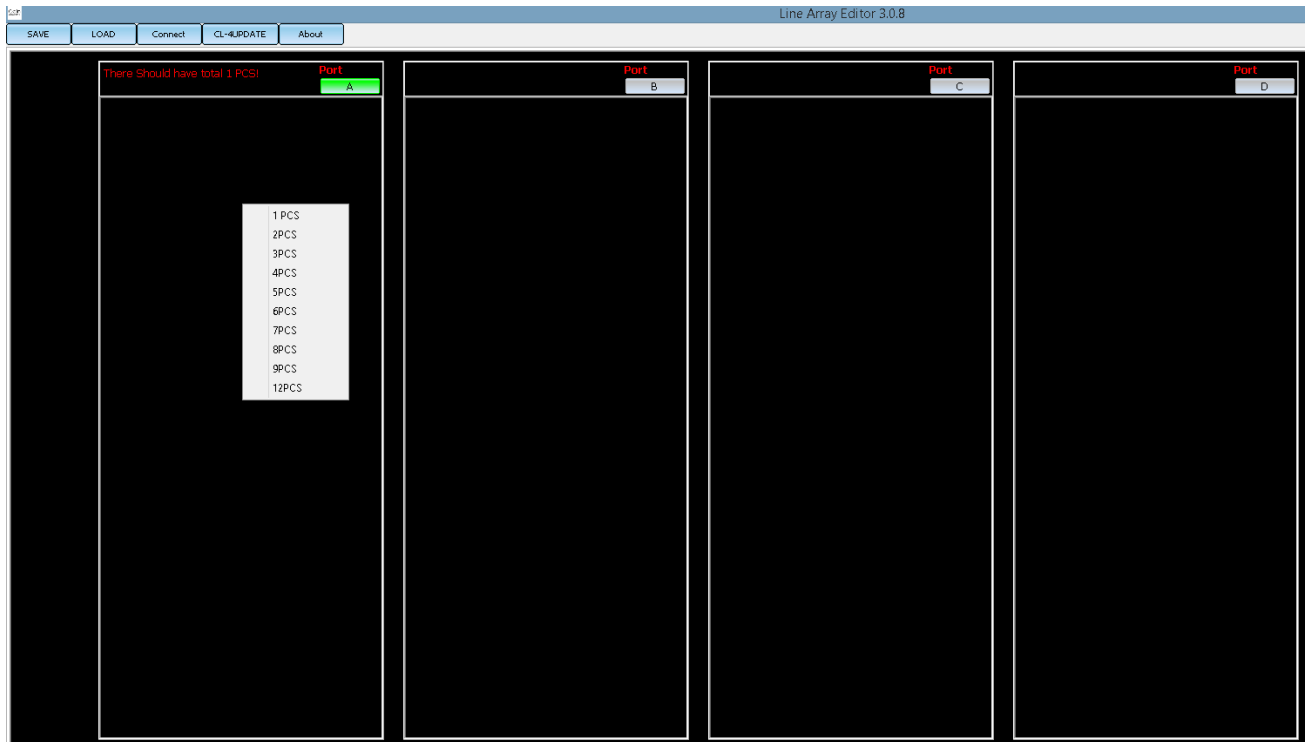


05) Click on the newly recognized IP address and click on the **OK** button to confirm. The screen will show:



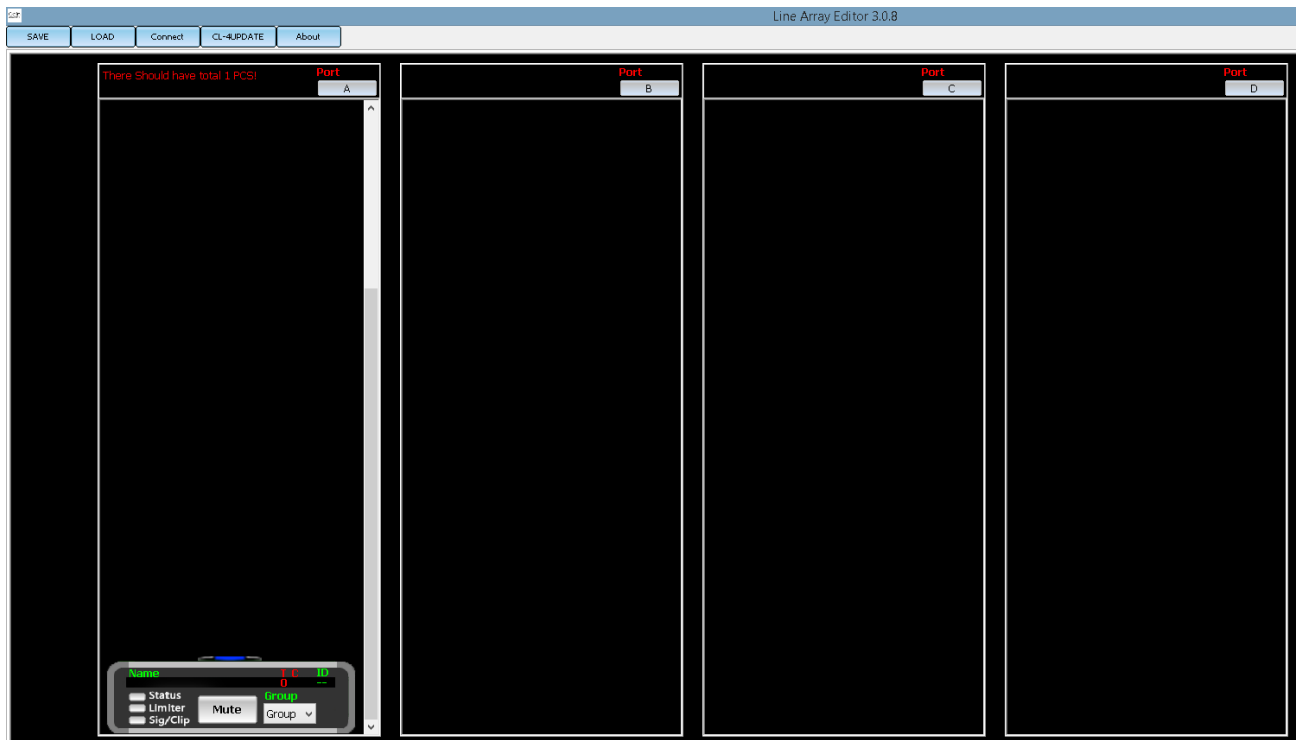
06) Click on the red **DISCONNECT** button to disconnect the router. **If you skip this step, you will not be allowed to add any devices in the subsequent steps.**

07) Right click in one of the 4 black squares to open the drop-down menu. The screen will show:



08) You can now **add a maximum of 12 speakers. Do not exceed this number!**

09) For example, if you have chosen 1PCS, the software will recognize 1 device. The screen will show:



10) The menu offers the following functions:



Click on the **MUTE** button to mute the speaker.  
 The Status/Limiter/Sig/Clip will light up to display the current signal status.  
 The software displays the current speaker's name, temperature in Celsius (TC) and the ID number.

11) Right click on the desired speaker. The screen will show:



Now it is possible to rename the chosen speaker, remove all speakers, remove the desired speaker, add a speaker or carry out an online update.

12) Click on the **GROUP** button to open a drop-down menu. The screen will show:



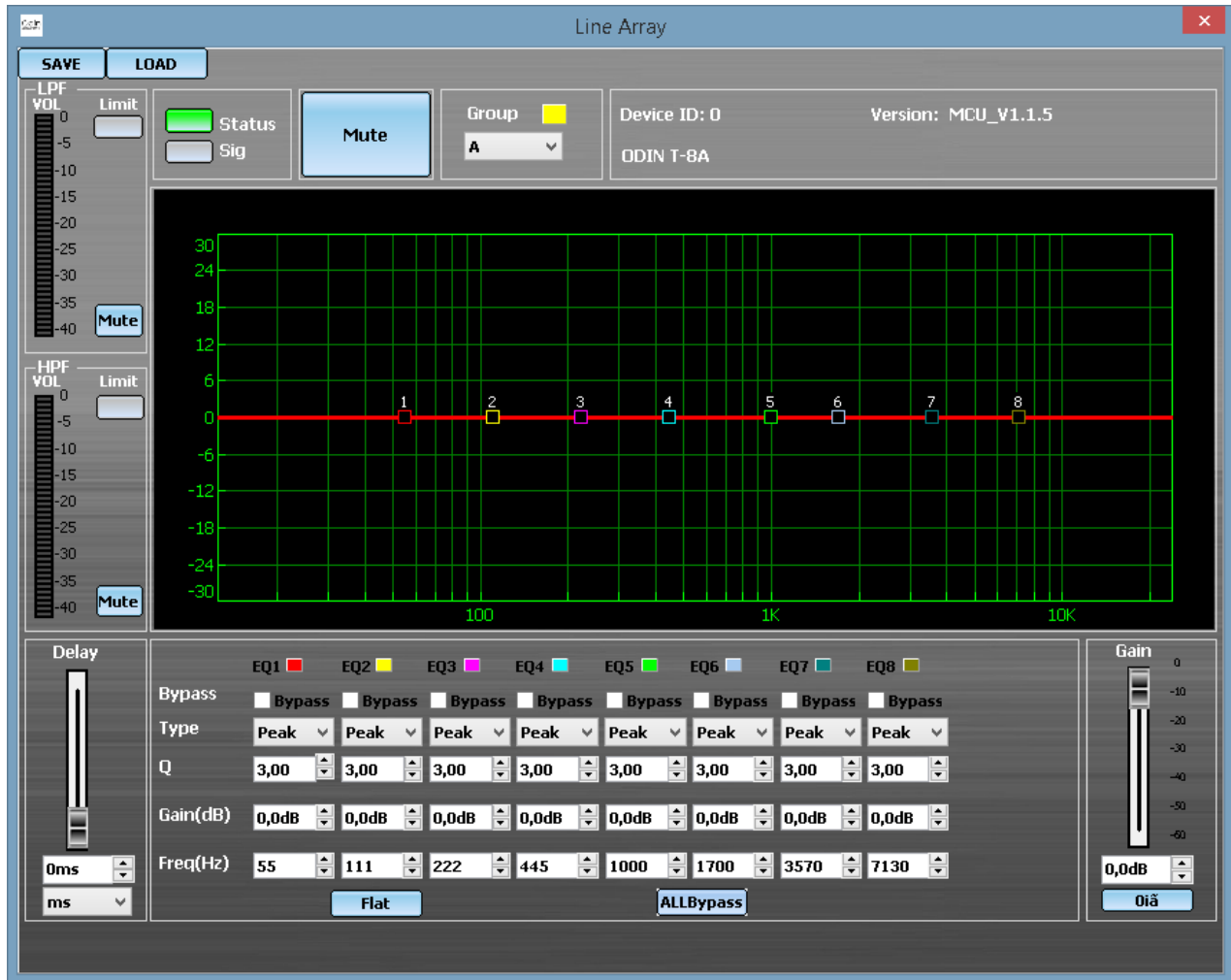
Assign the speakers to groups. For example, if you have 5 speakers and you assign them all to group A, then all 5 speakers will act the same while adjusting the settings for group A.

- 13) Click on the **SAVE** button in the upper-left corner, if you want to save your new configuration setup.
- 14) Click on the **LOAD** button in the upper-left corner, if you want to load a previously saved configuration setup.



## Speaker Configuration

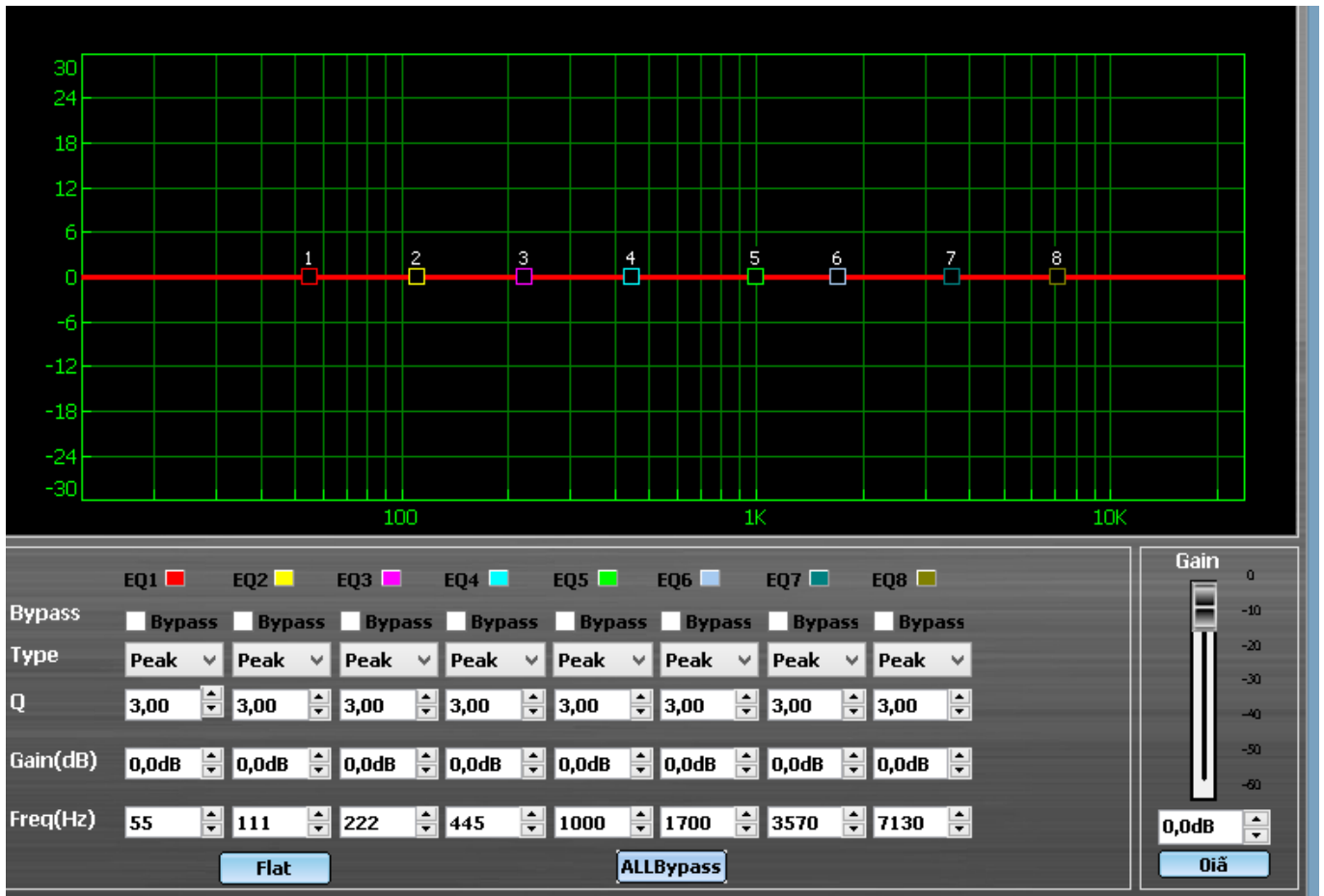
01) Double left click on the desired speaker. The following screen will appear:



02) The following options are available:

- **LPF volume:** Low input signal volume meter.
- **HPF volume:** High input signal volume meter.
- **Delay:** Move up the slider or click on the arrows to set delay. It is also possible to change the delay unit (milliseconds/meters/feet).
- **Gain:** Move up the slider or click on the arrows to set gain. The adjustment range is between 0 db and -60 dB. Click on the **180°** button to reverse the phase by 180°.

## Preset Section

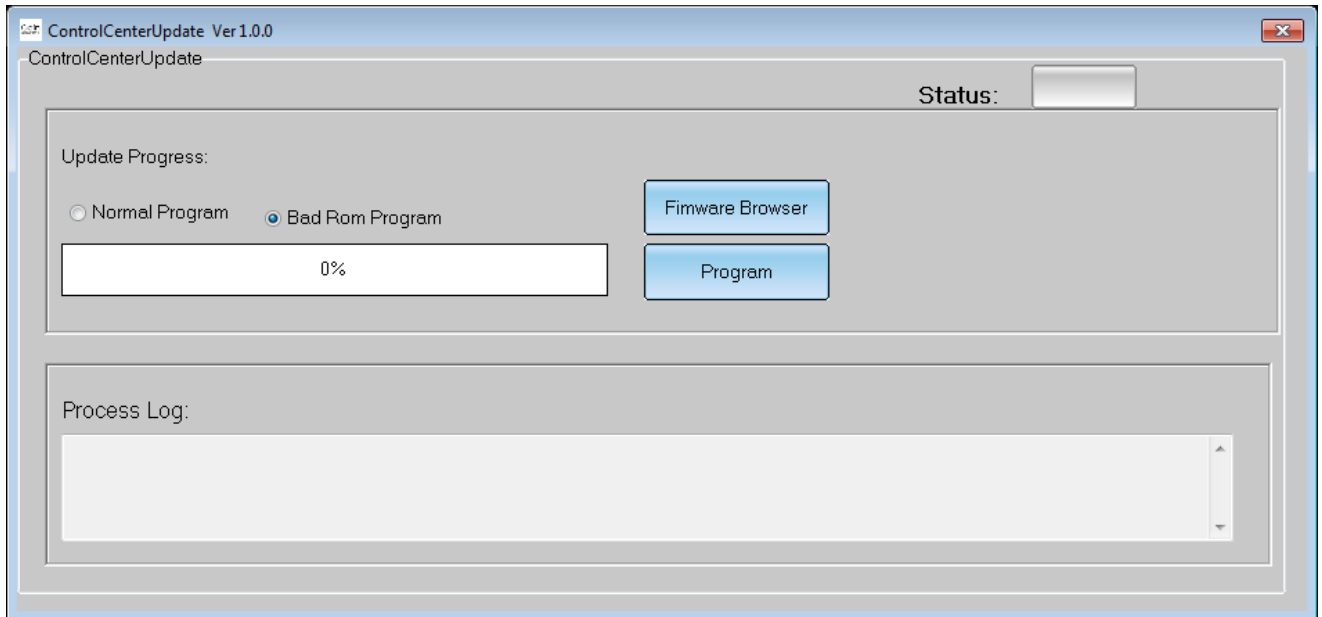


- 01) Each equalizer is equipped with the following options:
  - **Bypass:** Activate/deactivate the desired equalizer.
  - **Type:** Choose the desired curve type (Low/High/Peak).
  - **Q:** Click on the arrows to set the frequency width. The lower the Q, the wider the frequency.
  - **Gain(dB):** Click on the arrows to set gain.
  - **Freq(Hz):** Click on the arrows to set frequency.
- 02) Alternatively, to adjust the above options, you can drag and drop the numbered equalizer squares (1-8) around the graph. Observe the parameters change as you move the squares.
- 03) Click on the **FLAT** button to restore default settings.
- 04) Click on the **ALLBypass** button to deactivate all 8 equalizers.
- 05) Click on the **SAVE** and **LOAD** buttons in the upper-left corner, to save/load your presets.
- 06) Once the configuration setup and your presets have been saved, all your speakers will be visible on the screen:



## Software Update

01) In main menu, click on the **CL-4UPDATE** button to open the update screen. The screen will show:



- 02) Before you start the update, select Normal Program.
- 03) Click on the **FIRMWARE BROWSER** button to locate the update file (.bin) on your PC.
- 04) Click on the **PROGRAM** button to start the update.
- 05) The update progress will be displayed in the progress bar.
- 06) Restart the software for the update to take effect.

## About

01) In main menu, click on the **ABOUT** button to open the screen.



02) The screen displays all the necessary software information.

Design and product specifications are subject to change without prior notice.



Website: [www.Dap-audio.info](http://www.Dap-audio.info)  
Email: [service@highlite.nl](mailto:service@highlite.nl)

---

# Odin

AUDIOSYSTEMS BY DAP

©2016 ODIN